

PHASE 1

**STRATA PLAN OF PART OF STRATA PLAN V.R. 2083
LOT 1, DISTRICT LOT 3903**

AND 4213, Plan 21364

Resort Municipality of Whistler

Scale: 1:750 m.



First Sheet - Sheet 1 of 23 Sheets

Strata Plan V.R. 2083 deposited and registered in the Land Title Office at Vancouver, B.C. this 1st day of FEBRUARY, 1988

[Signature]
DEPUTY Registrar

The Address for the Service of Documents on the 'Strata Corporation' is:

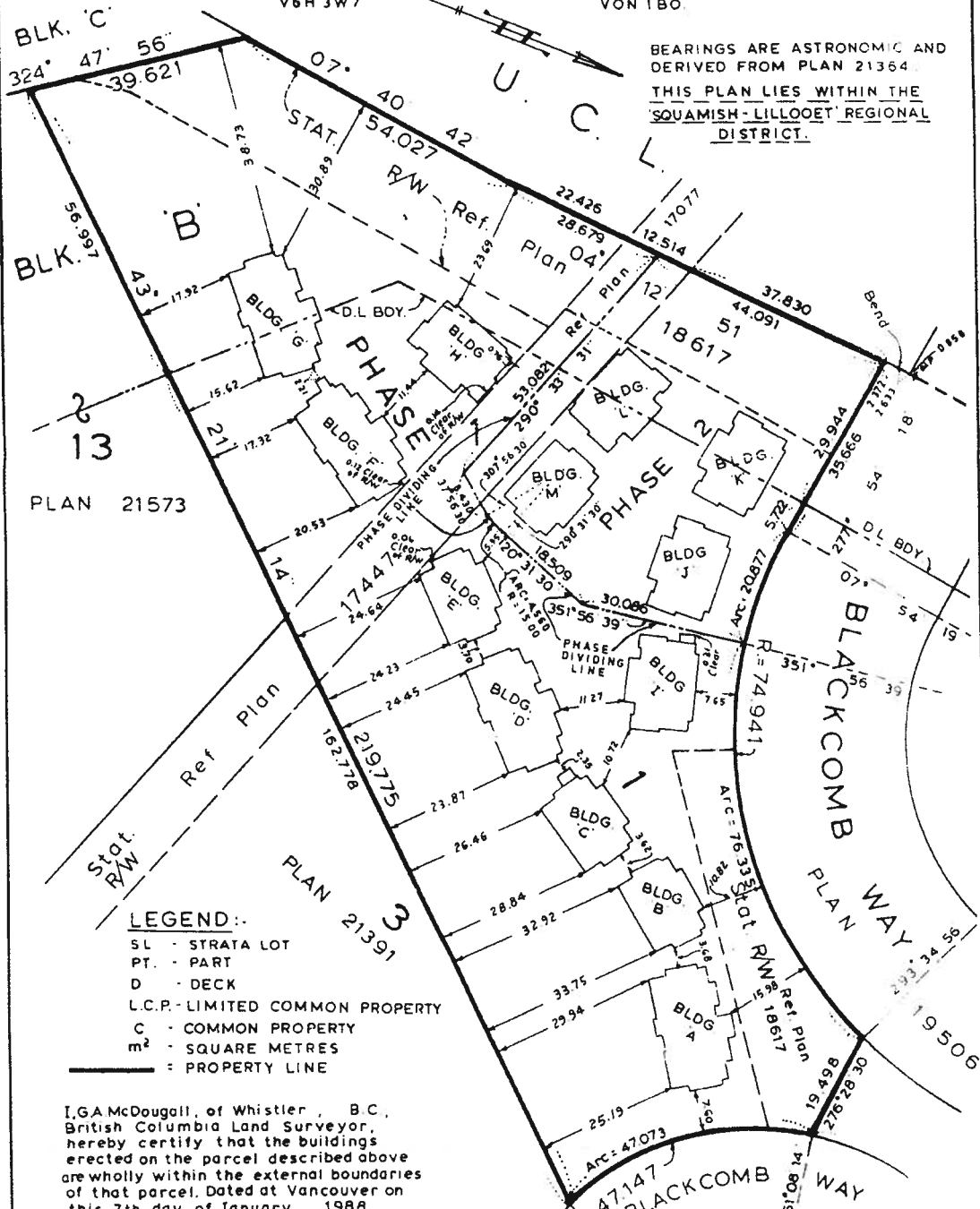
The Owners' Strata Plan No V.R. 2083

c/o DAYAN & CO
202-1807 Maritime Mews,
Granville Island, Vancouver, B.C.
V6H 3W7

Civic Address is:
4501 Blackcomb Way,
Whistler, B.C.
VON 1B0

BEARINGS ARE ASTRONOMIC AND DERIVED FROM PLAN 21364

THIS PLAN LIES WITHIN THE SQUAMISH-LILLOOET REGIONAL DISTRICT.



LEGEND:

- SL - STRATA LOT
- PT. - PART
- D - DECK
- L.C.P. - LIMITED COMMON PROPERTY
- C - COMMON PROPERTY
- m² - SQUARE METRES
- = PROPERTY LINE

I, GA McDougall, of Whistler, B.C., British Columbia Land Surveyor, hereby certify that the buildings erected on the parcel described above are wholly within the external boundaries of that parcel. Dated at Vancouver on this 7th. day of January, 1988

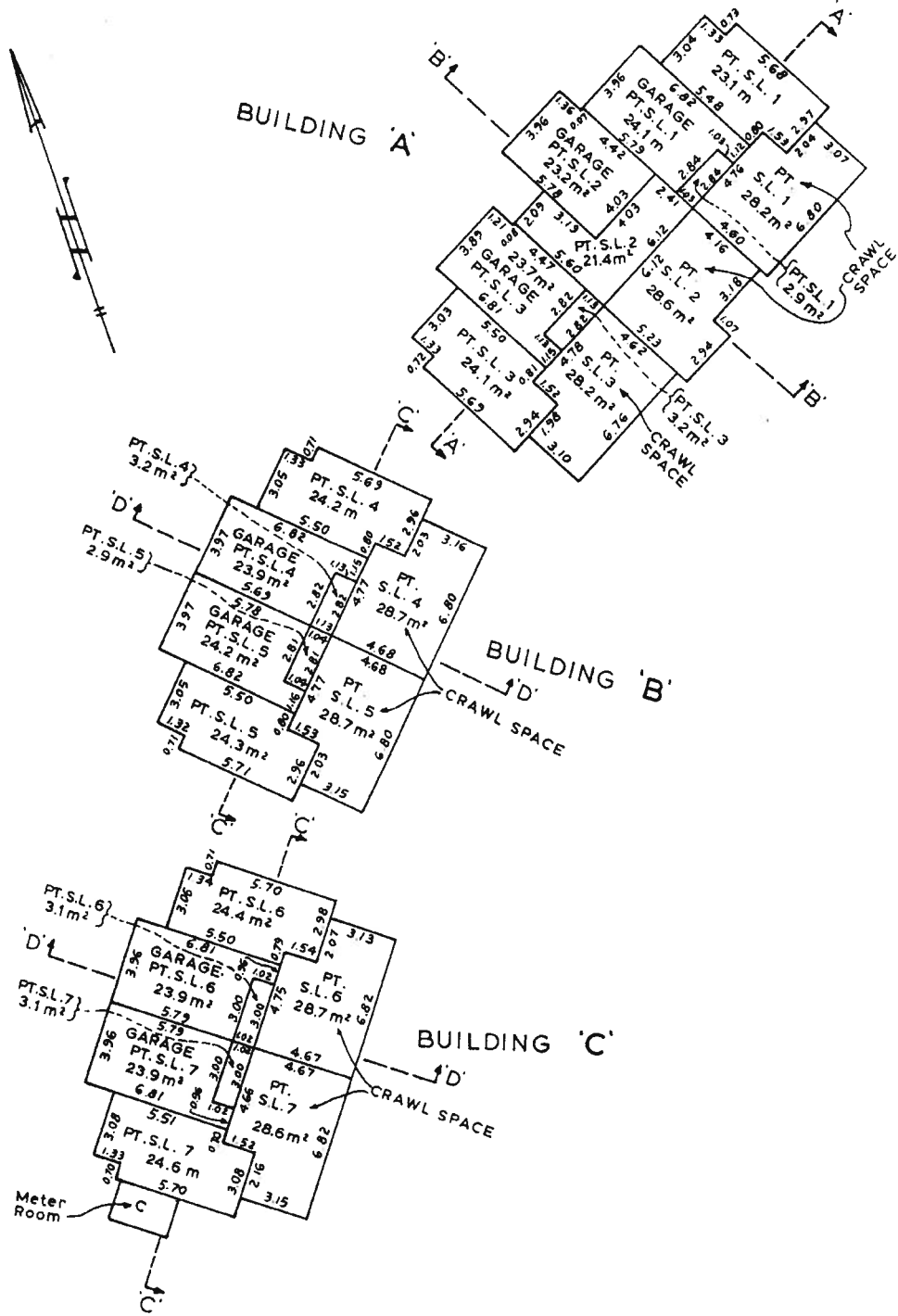
[Signature]
B.C.L.S.

**HERMON, BUNBURY & OKE,
PROFESSIONAL LAND SURVEYORS,
VANCOUVER & WHISTLER, B.C.**

PHASE 1

BASEMENT

SCALE: 1:200 m.



January 7th, 1988

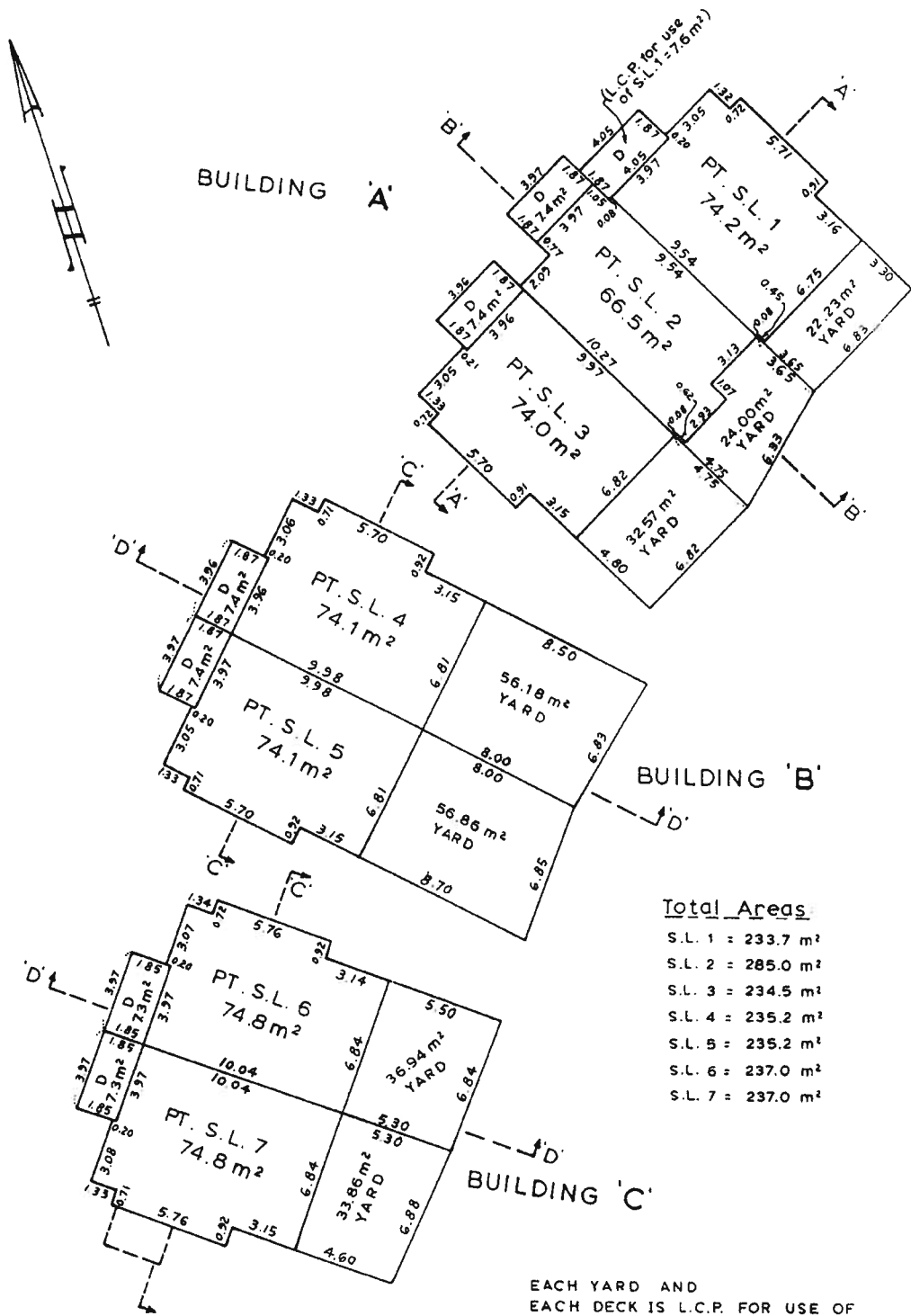
4539.0

10-886-1112

STRATA PLAN
V.R. 2083

PHASE 1
MAIN FLOOR

SCALE: 1:200 m.



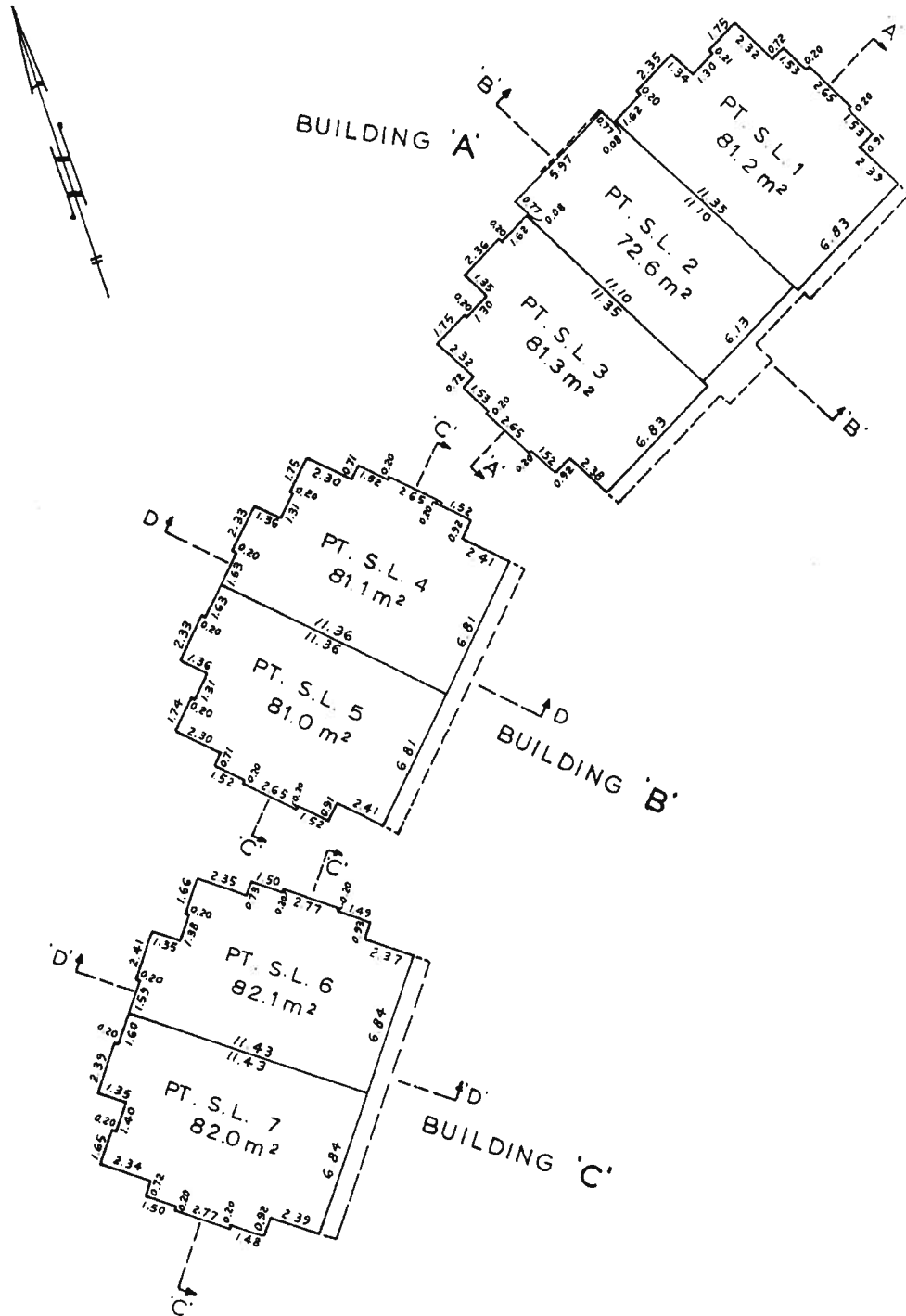
Total Areas

- S.L. 1 = 233.7 m²
- S.L. 2 = 285.0 m²
- S.L. 3 = 234.5 m²
- S.L. 4 = 235.2 m²
- S.L. 5 = 235.2 m²
- S.L. 6 = 237.0 m²
- S.L. 7 = 237.0 m²

EACH YARD AND
EACH DECK IS L.C.P. FOR USE OF
THE IMMEDIATELY ABUTTING S.L.

PHASE 1
SECOND FLOOR

SCALE: 1:200 m.



ID-608-11/2

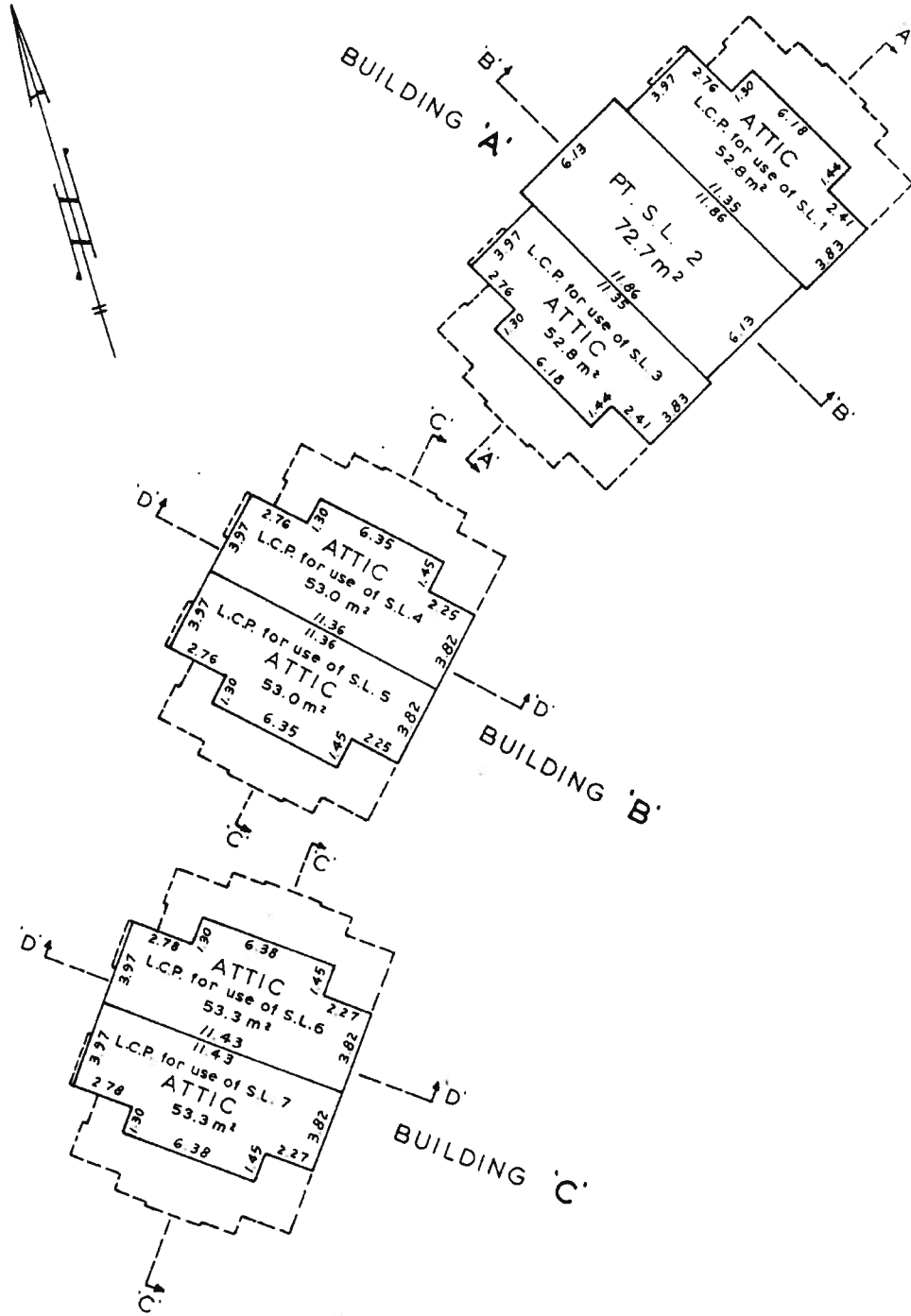
January 7th 1988

9.4519.0

PHASE 1

THIRD FLOOR & ATTICS

SCALE:-1: 200 m.



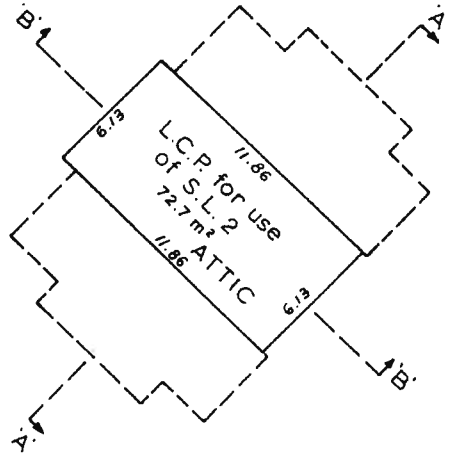
PHASE 1

ATTIC

SCALE: 1:200 m.



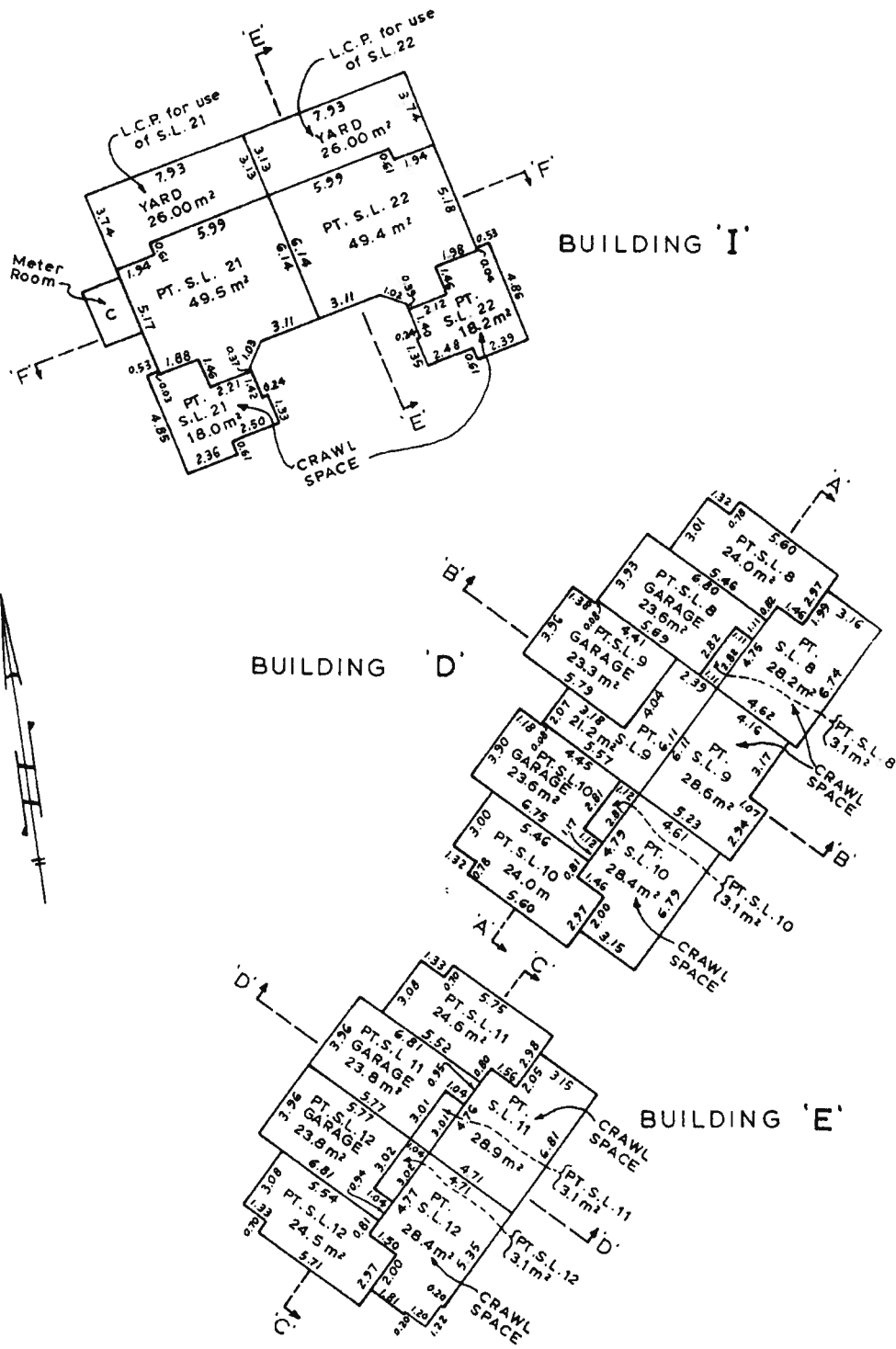
BUILDING 'A'



STRATA PLAN
V.R. 2083

PHASE 1
BASEMENT

SCALE:-1 : 200 m.



9D-886-11/2

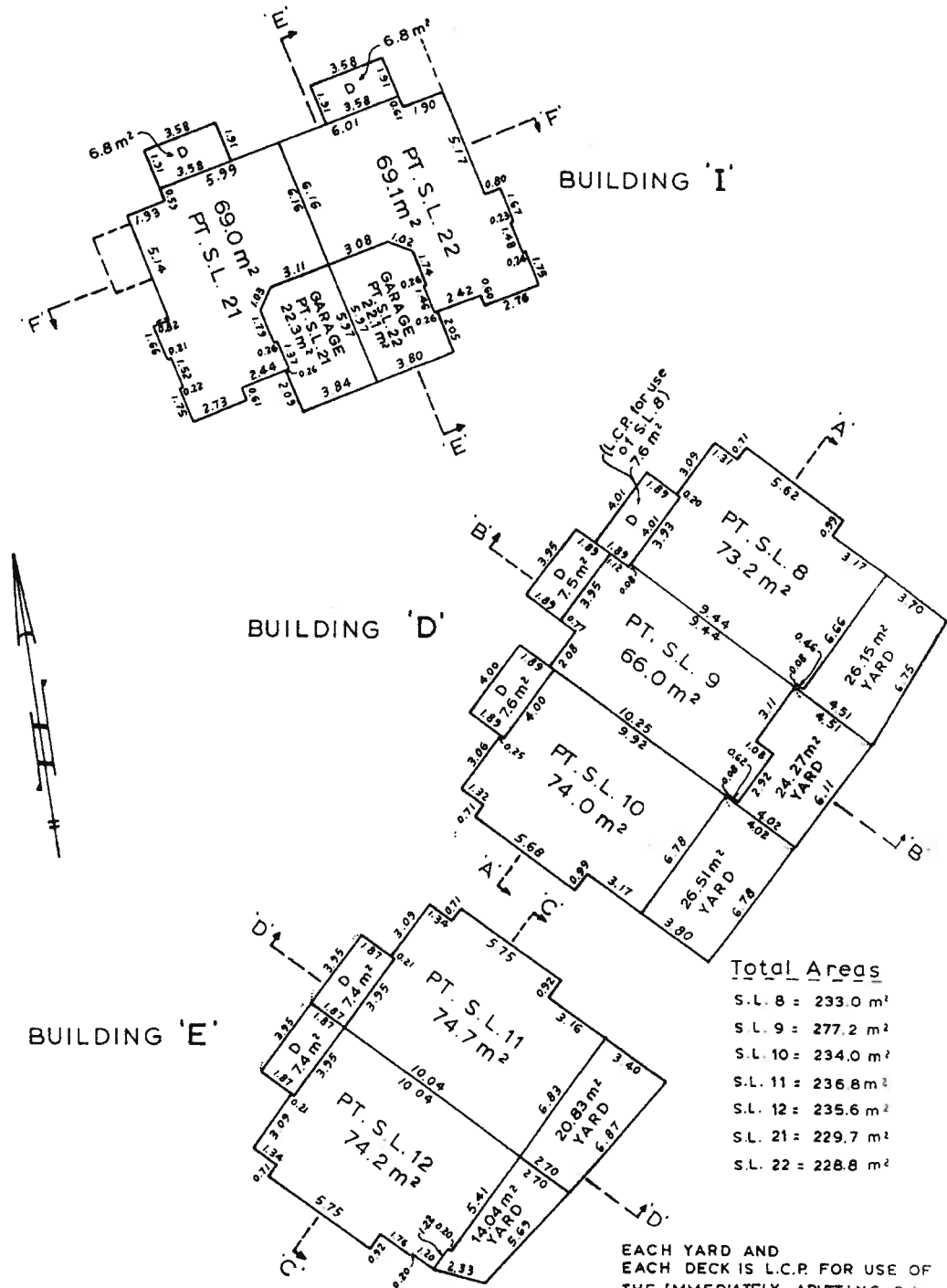
January 7th, 1988.

S-4539.0

STRATA PLAN
V.R. 2083

PHASE 1
MAIN FLOOR

SCALE: 1:200 m.



Total Areas

- S.L. 8 = 233.0 m²
- S.L. 9 = 277.2 m²
- S.L. 10 = 234.0 m²
- S.L. 11 = 236.8 m²
- S.L. 12 = 235.6 m²
- S.L. 21 = 229.7 m²
- S.L. 22 = 228.8 m²

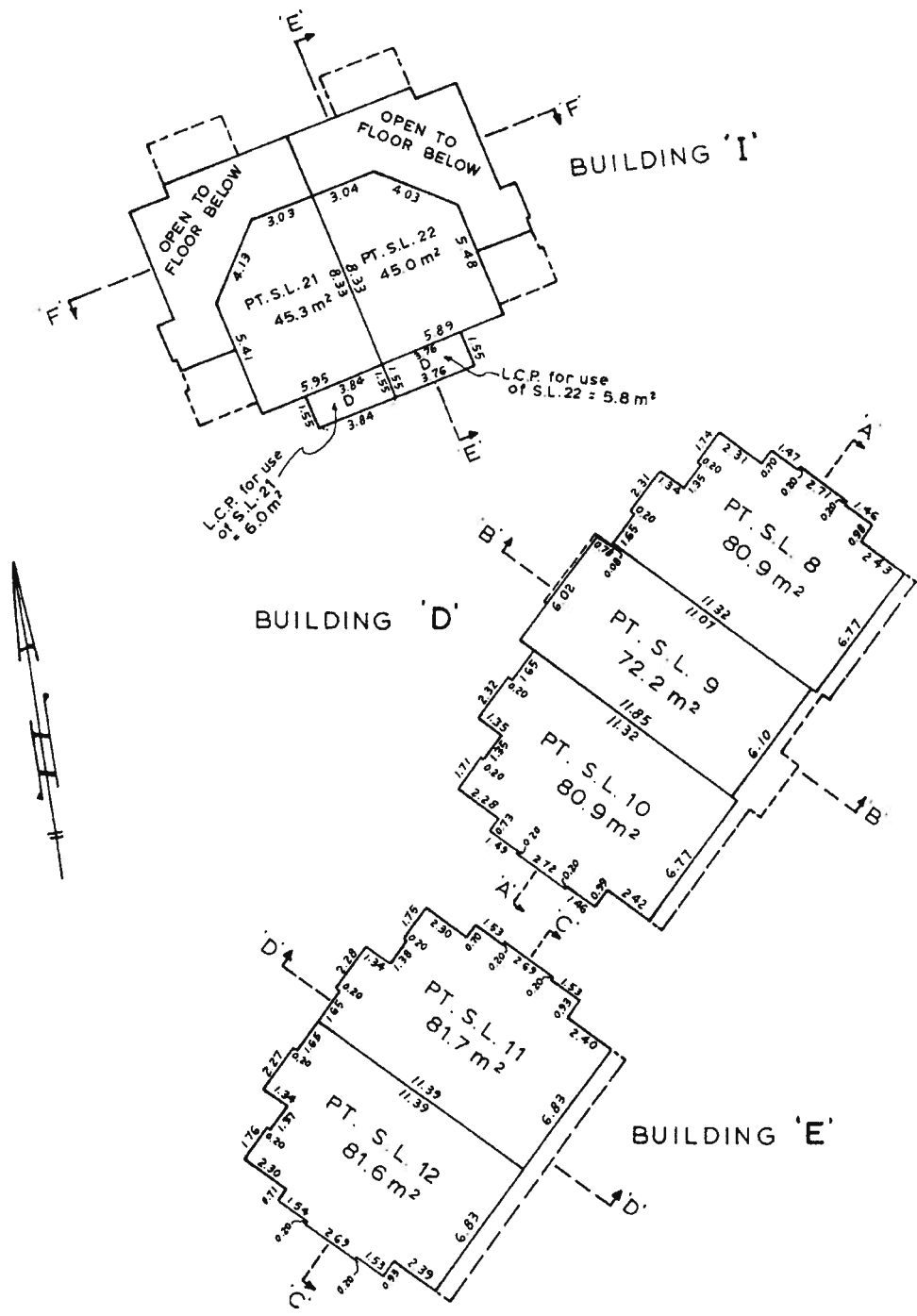
EACH YARD AND EACH DECK IS L.C.P. FOR USE OF THE IMMEDIATELY ADJUTING S.L.

10-000-11/2

January 7th, 1988. *J.M.C.*

PHASE 1
SECOND FLOOR

SCALE:-1 : 200 m.



10-608-11/2

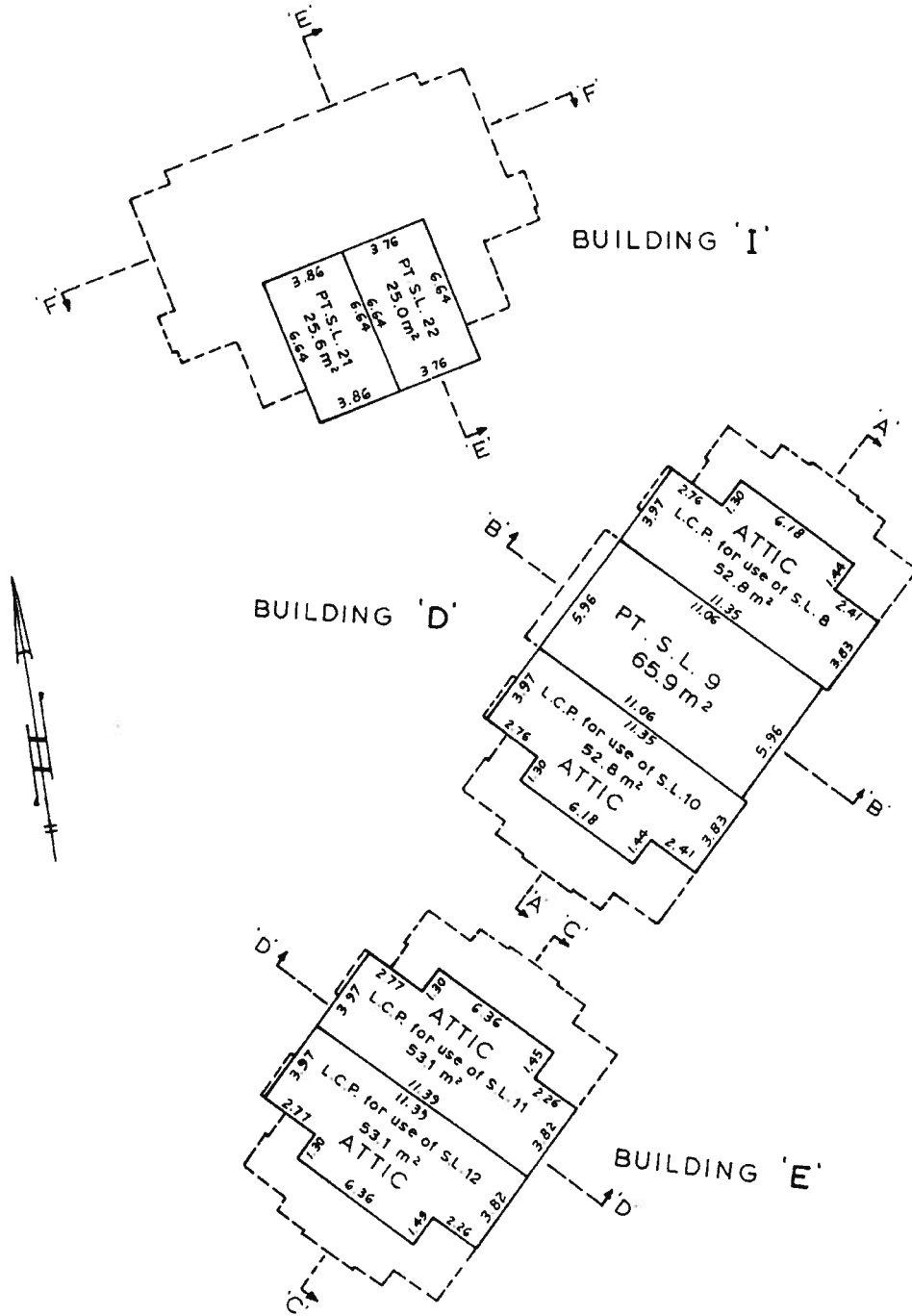
January 7th 1988

9-4539.0

PHASE 1

THIRD FLOOR & ATTICS

SCALE: 1:200 m.



10-608-11/2

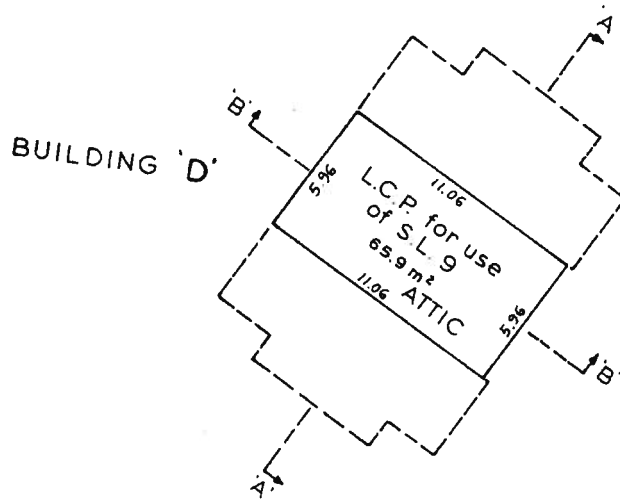
January 7th, 1983 *[Signature]*

9:4539.0

PHASE 1

ATTIC

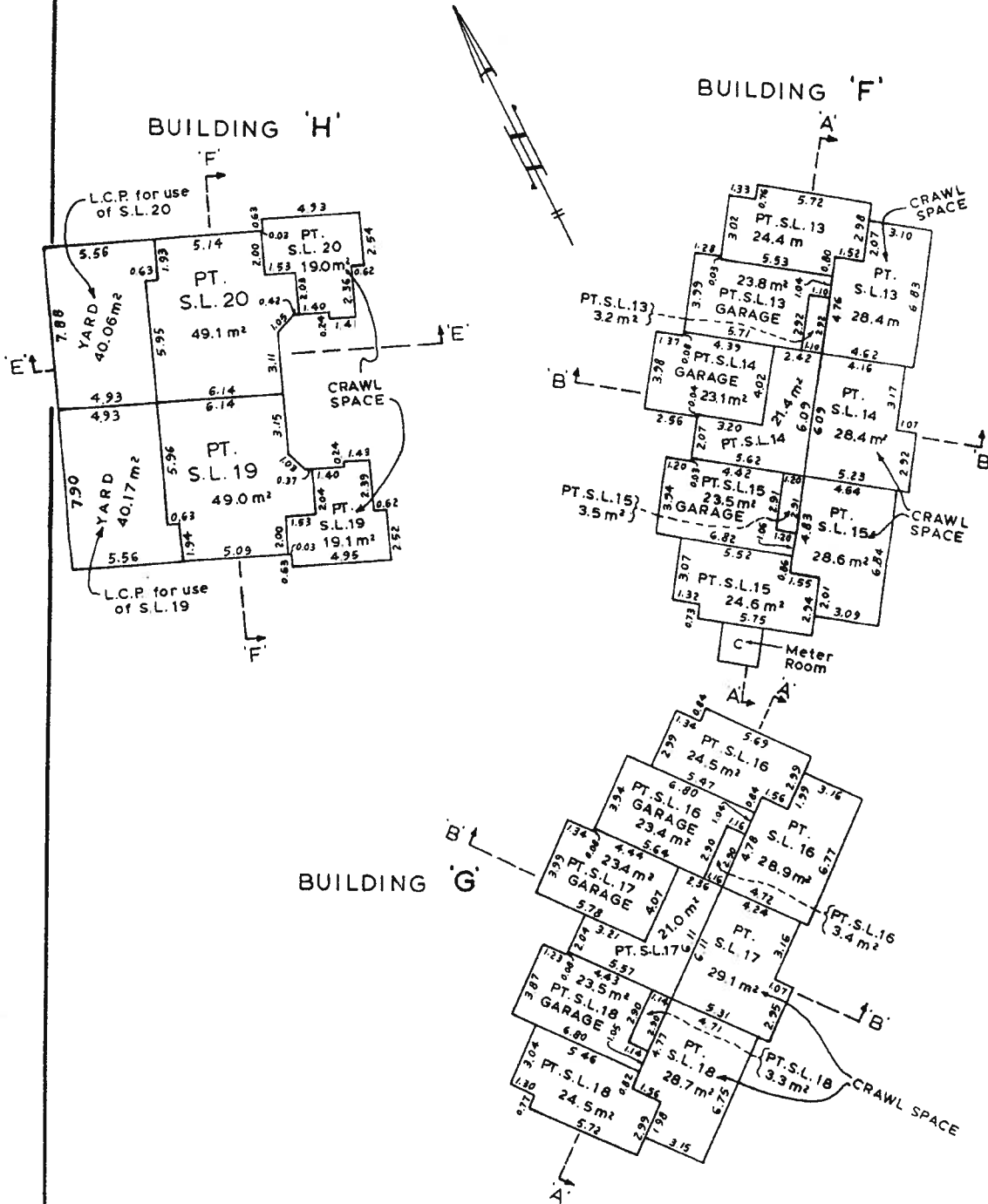
SCALE: 1:200 m.



STRATA PLAN V.R. 2083

PHASE 1 BASEMENT

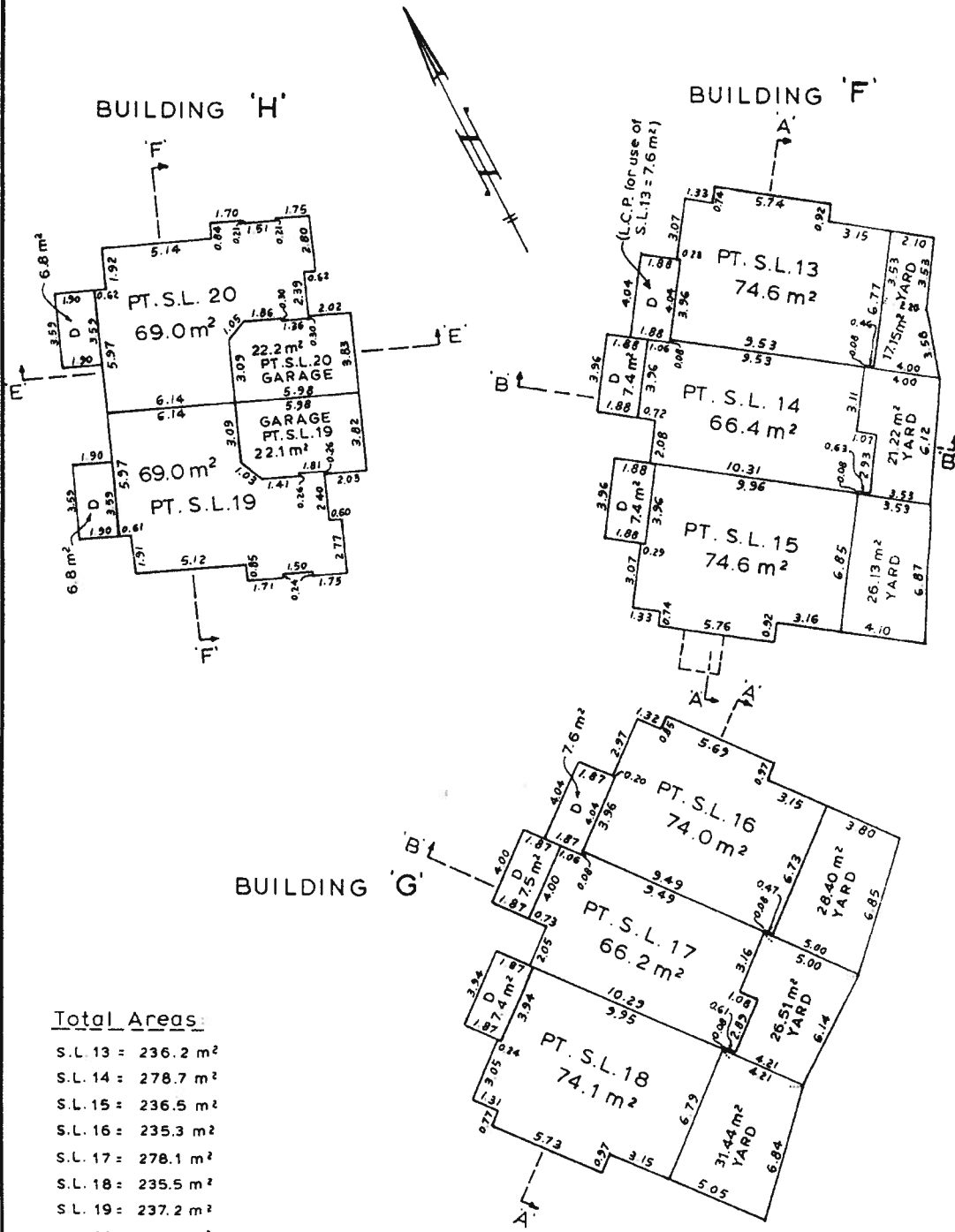
SCALE: 1:200 m.



STRATA PLAN
V.R. 2083

PHASE 1
MAIN FLOOR

SCALE: 1:200 m.



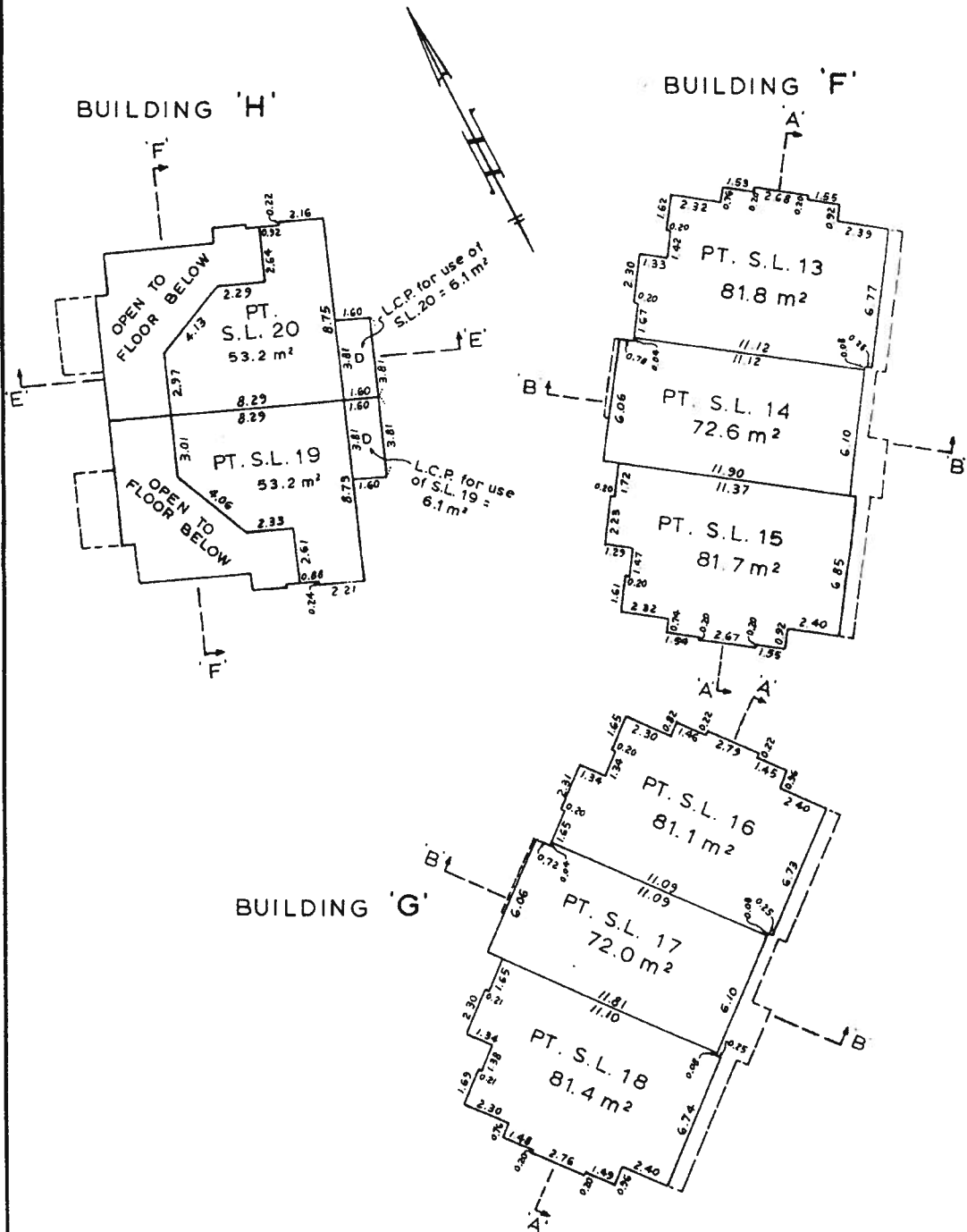
Total Areas:

- S.L. 13 = 236.2 m²
- S.L. 14 = 278.7 m²
- S.L. 15 = 236.5 m²
- S.L. 16 = 235.3 m²
- S.L. 17 = 278.1 m²
- S.L. 18 = 235.5 m²
- S.L. 19 = 237.2 m²
- S.L. 20 = 237.9 m²

EACH YARD AND
EACH DECK IS L.C.P. FOR USE OF
THE IMMEDIATELY ABUTTING S.L.

PHASE 1
SECOND FLOOR

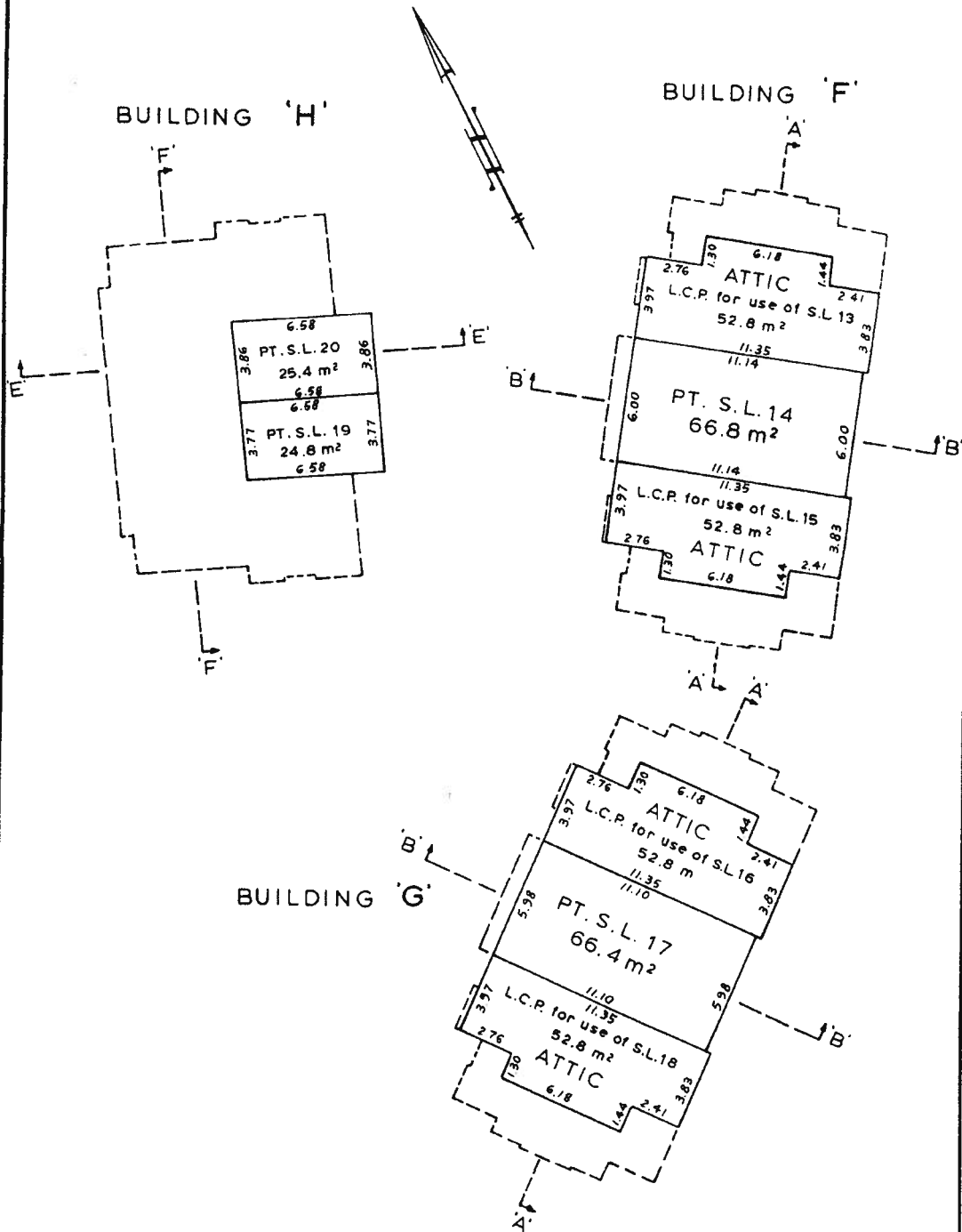
SCALE: 1:200 m.



PHASE 1

THIRD FLOOR & ATTICS

SCALE: 1:200 m.



10-006-1112

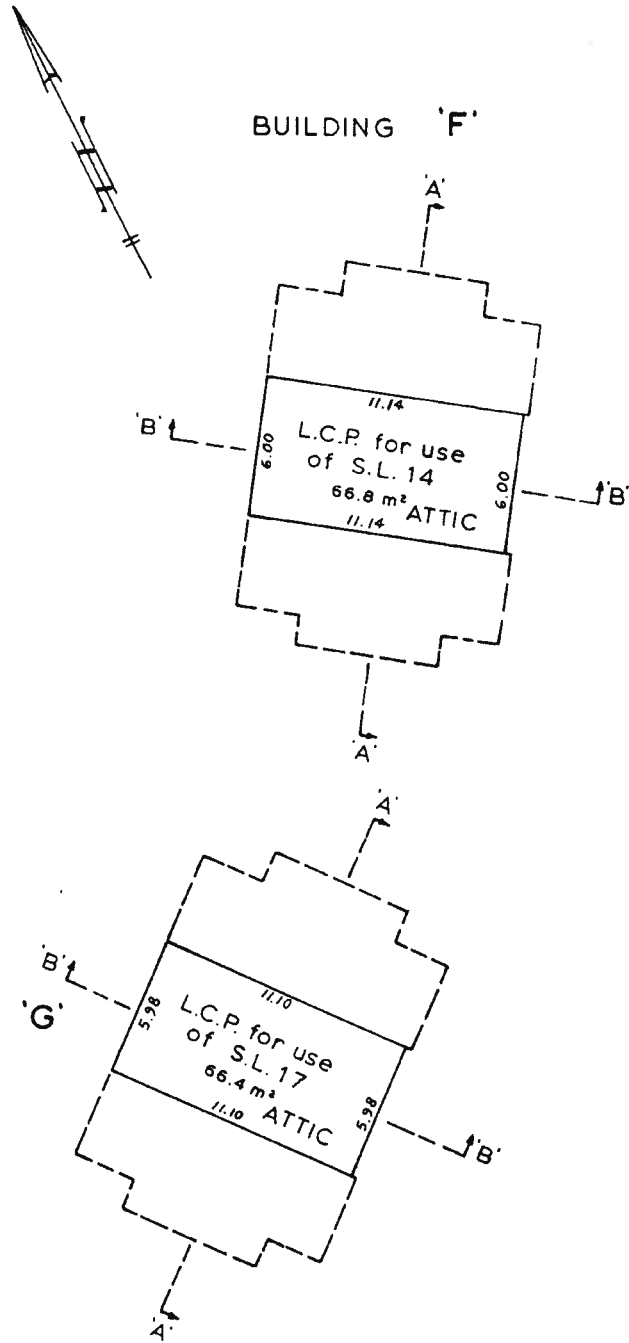
January 7th, 1988

S-4539.0

PHASE 1

ATTIC

SCALE: 1 : 200 m.

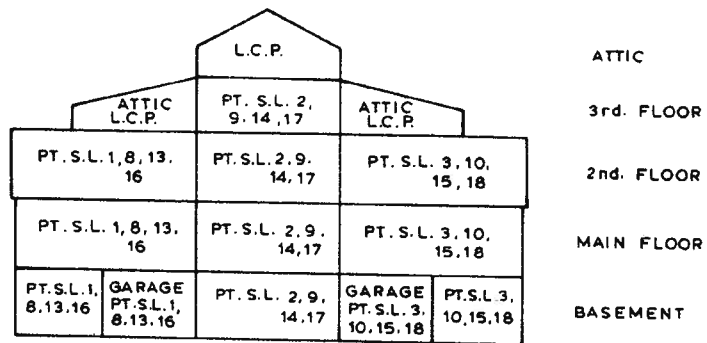


PHASE 1
SECTIONS

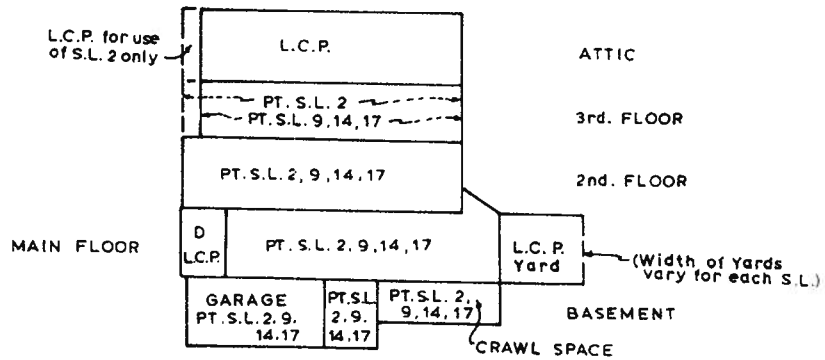
Typical for Buildings 'A', 'D', 'F' & 'G'

SCALE: 1:200 m.

SECTION 'A' - 'A'



SECTION 'B' - 'B'

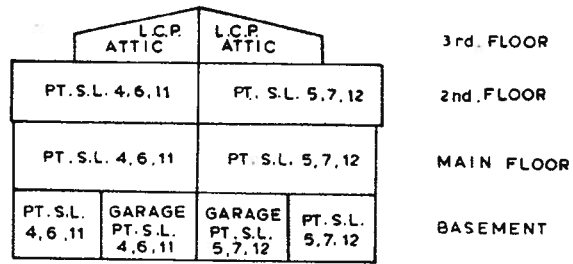


PHASE 1
SECTIONS

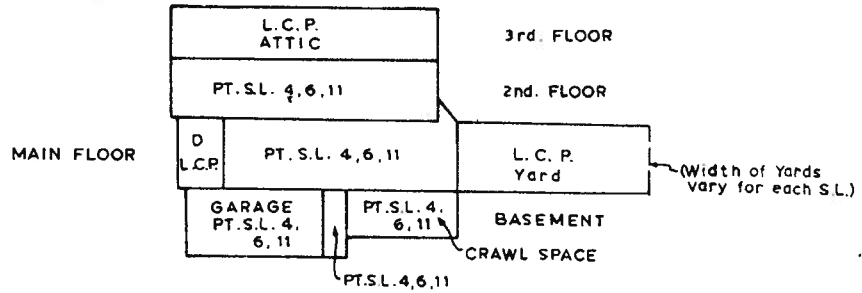
Typical for Buildings 'B', 'C' & 'E'

SCALE: 1 : 200 m.

SECTION 'C'-'C'



SECTION 'D'-'D'



D-488-11/2

January 7th, 1988

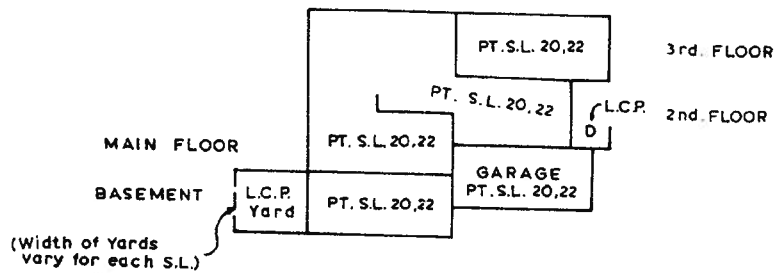
PHASE 1

SECTIONS

Typical for Buildings 'H' & 'I'

SCALE: 1 : 200 m.

SECTION 'E'-'E'



SECTION 'F'-'F'

