

**PROPOSED PLAN OF TREE PRESERVATION AREA ON A PORTION
OF D.L. 2291. PLAN 19602. Gp.1. NEW WESTMINSTER DISTRICT**

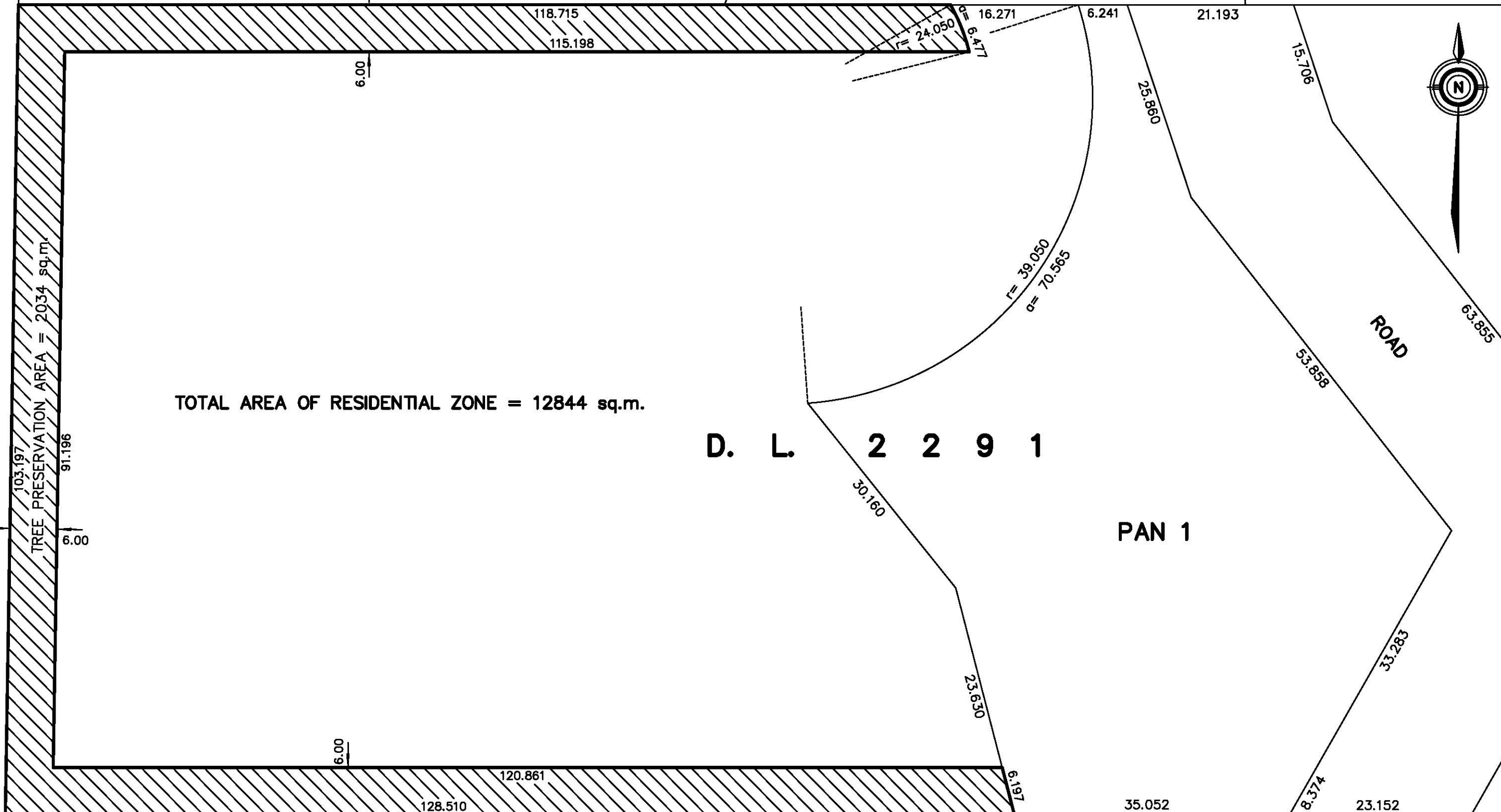
SCALE : 1 : 500
ALL DISTANCES SHOWN ARE IN METRES



PARK
STRATA PLAN VR 2639

GONDOLA WAY
STRATA PLAN VR 2639
COMMON
PROPERTY

BLOCK 'B'
D.L. 7135



TOTAL AREA OF RESIDENTIAL ZONE = 12844 sq.m.

TREE PRESERVATION AREA = 2034 sq.m.

D. L. 2 2 9 1

PAN 1

U.C.L.

D.L. 7798

R/W PLAN LMP 16946

COMMON PROPERTY

STRATA PLAN LMS 4695

DWG. FILE PROSUB75.