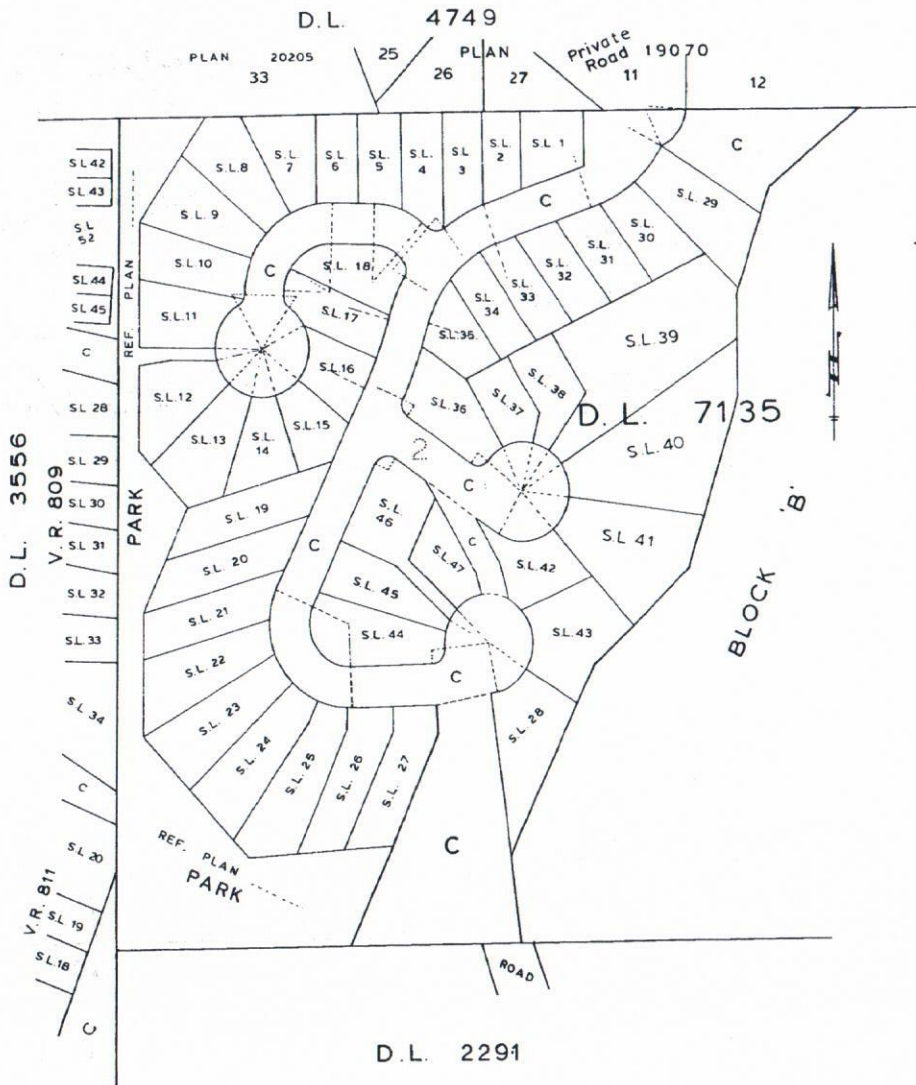


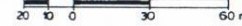
08-R-68

First Sheet - Sheet 1 of 4 Sheets
VR 2639



**BARE LAND STRATA PLAN
OF BLOCK 2, D.L. 7135,
PLAN 22798, GP. 1, N.W.D.**

**RESORT MUNICIPALITY OF WHISTLER
Scale: 1:1250 (Metric)**



Strata Plan VR 2639 deposited and registered in the Land Title Office at Vancouver, B.C. this 2ND day of MAY 1990

[Signature]
DEPUTY Registrar
6D56089

Civic Address is NOT AVAILABLE

The Address for the Service of Documents on the 'Strata Corporation' is:
The Owners' Strata Plan No. VR 2639.
c/o 2800 PARK PLACE,
666 BURRARD STREET,
VANCOUVER, B.C. V6C 2Z7.

Approved as a 'Bare Land' Strata Plan under the 'Condominium Act' on the 9th day of APRIL, 1990

[Signature]
Approving Officer for
Resort Municipality of Whistler

THIS PLAN LIES WITHIN THE
'SQUAMISH-LILLOOET' REGIONAL DISTRICT

I, PAT. Bunbury, a British Columbia Land Surveyor, of WHISTLER, in British Columbia, certify that I was present at and personally superintended the Survey represented by this Plan and that the Survey and Plan are correct. The Survey was completed on the 26th day of January, 1990.

[Signature]
P.A.T. Bunbury
B.C.L.S.

Legend:-

Bearings are Astronomic and derived from Survey Plan of Blocks 'A' & 'B', D.L. 7135

- Old Iron Posts found ... shown - ● OIP
- Old Lead Plugs " " " " - ○ OLP
- Old Pipe Posts " " " " - ● O.P.P.
- Old Capped Iron Post " " " " - ● O.C.I.P.
- Iron Posts set " " " " - ● IP
- Lead Plugs " " " " - ● LP
- Witness " " " " - WT.

- S.L. indicates - Strata Lot
- C - " - Common Property
- ha - " - hectares
- m² - " - square metres

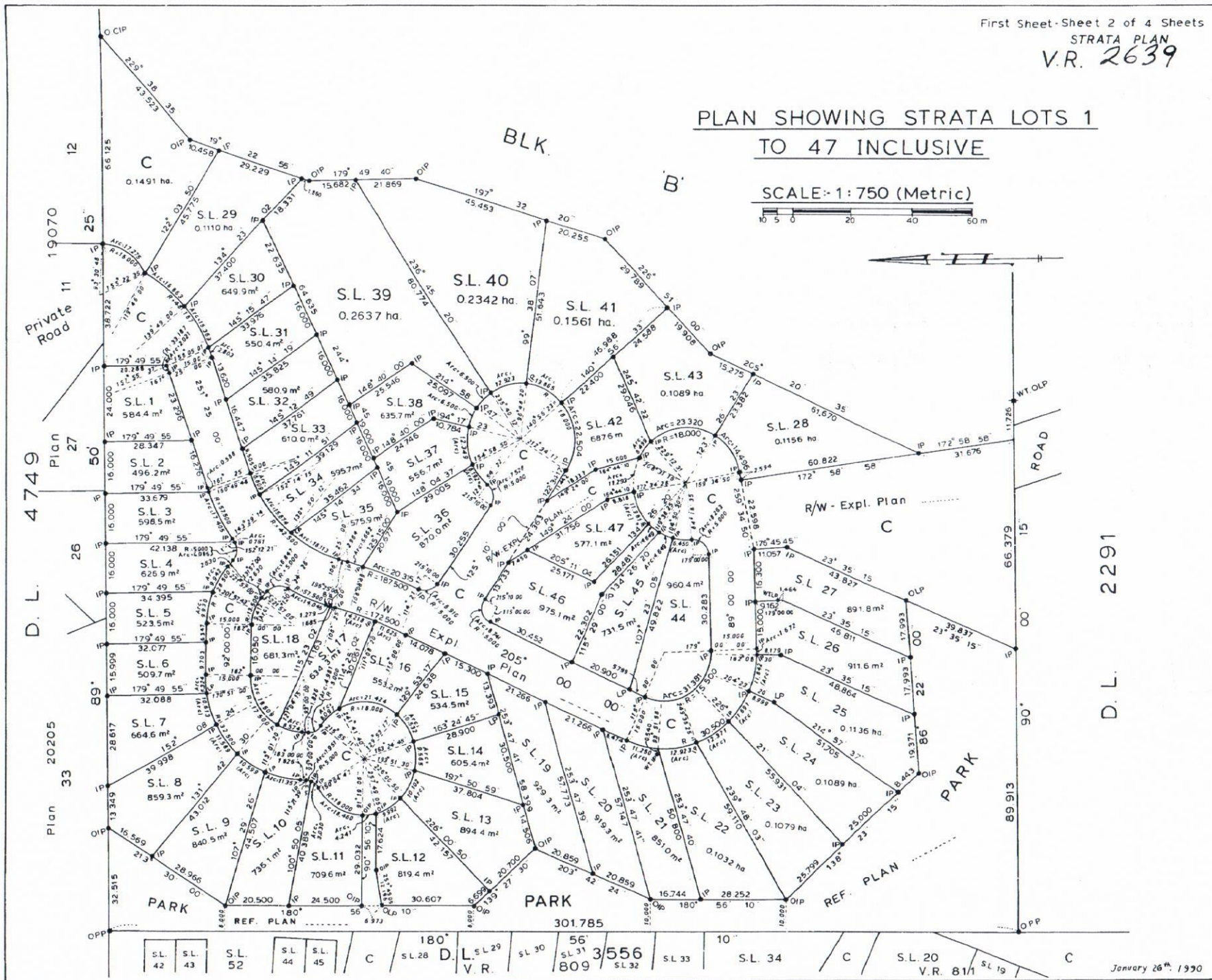
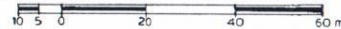
HERMON, BUNBURY & OKE,
PROFESSIONAL LAND SURVEYORS & ENGINEERS,
VANCOUVER & WHISTLER, B.C.

First Sheet-Sheet 2 of 4 Sheets

STRATA PLAN
V.R. 2639

PLAN SHOWING STRATA LOTS 1 TO 47 INCLUSIVE

SCALE: 1:750 (Metric)



S.L. 42	S.L. 43	S.L. 52	S.L. 44	S.L. 45	C	180°	S.L. 28	D.L. 2291	S.L. 29	S.L. 30	56°	S.L. 31	3556	S.L. 32	S.L. 33	10°	S.L. 34	C	S.L. 20	S.L. 19	C
													809						V.R. 811		

January 26th 1990

S-4904 © Pat.B.

Second Sheet Sheet 3 of 4 Sheets
STRATA PLAN VR 2639

CONDOMINIUM ACT

FORM 3	FORM 2	FORM 1	FORM 2
SHEET NO	Schedule of Interest Upon Destruction	Unit Entitlement	Schedule of Interest Upon Destruction
1	110	1	FORM 2
2	110	1	
3	115	1	
4	115	1	
5	120	1	
6	128	1	
7	128	1	
8	140	1	
9	140	1	
10	140	1	
11	128	1	
12	140	1	
13	140	1	
14	120	1	
15	115	1	
16	110	1	
17	120	1	
18	120	1	
19	128	1	
20	140	1	
21	140	1	
22	145	1	
23	145	1	
24	145	1	
25	145	1	
26	140	1	
27	128	1	
28	128	1	
29	120	1	
30	115	1	
31	115	1	
32	115	1	
33	115	1	
34	115	1	
35	115	1	
36	128	1	
37	128	1	
38	140	1	
39	160	1	
40	160	1	
41	160	1	
42	128	1	
43	140	1	
44	140	1	
45	140	1	
46	128	1	
47	120	1	
AGGREGATE	6105	47	

FORM 3	FORM 2	FORM 1	FORM 2
SHEET NO	Schedule of Interest Upon Destruction	Unit Entitlement	Schedule of Interest Upon Destruction
1	110	1	FORM 2
2	110	1	
3	115	1	
4	115	1	
5	120	1	
6	128	1	
7	128	1	
8	140	1	
9	140	1	
10	140	1	
11	128	1	
12	140	1	
13	140	1	
14	120	1	
15	115	1	
16	110	1	
17	120	1	
18	120	1	
19	128	1	
20	140	1	
21	140	1	
22	145	1	
23	145	1	
24	145	1	
25	145	1	
26	140	1	
27	128	1	
28	128	1	
29	120	1	
30	115	1	
31	115	1	
32	115	1	
33	115	1	
34	115	1	
35	115	1	
36	128	1	
37	128	1	
38	140	1	
39	160	1	
40	160	1	
41	160	1	
42	128	1	
43	140	1	
44	140	1	
45	140	1	
46	128	1	
47	120	1	
AGGREGATE	6105	47	

Accepted on Forms 1 & 2 on the 11 day of APRIL 1990

Superintendent of Real Estate

5-A. UTAOR DECLARATION

1. I/WE the undersigned do solemnly declare that

2. The Strata Plan is intended for residential use

3. I/WE make this solemn declaration conscientiously

knowing the contents and effect of the said

Declared before me at Vancouver in the

Province of British Columbia, this 13 day of

February A.D. 1990

A Notary Public in and for the Province

of British Columbia

Owner, Developer
Bank of Credit and Commerce Canada
353853 BRITISH COLUMBIA LTD.

Authorized Signatory

Authorized Signatory

Authorized Signatory

Authorized Signatory

Authorized Signatory

January 26th 1990

